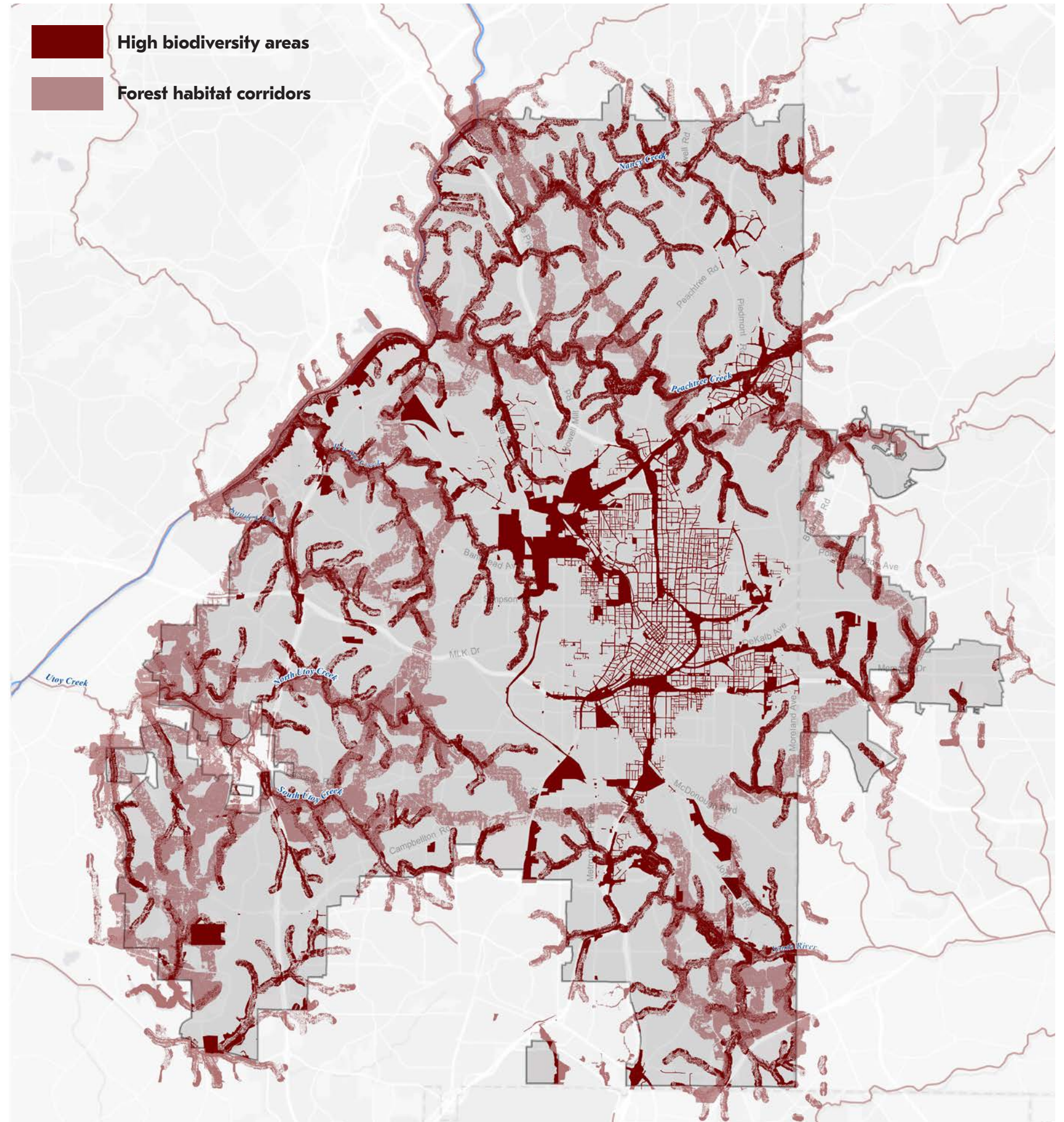


RESTORE

The overlay zones note areas for restoration opportunities promoting health, connectivity and improved ecological function and acts as a guide for future (re)development and stewardship efforts.

What's included for protection:

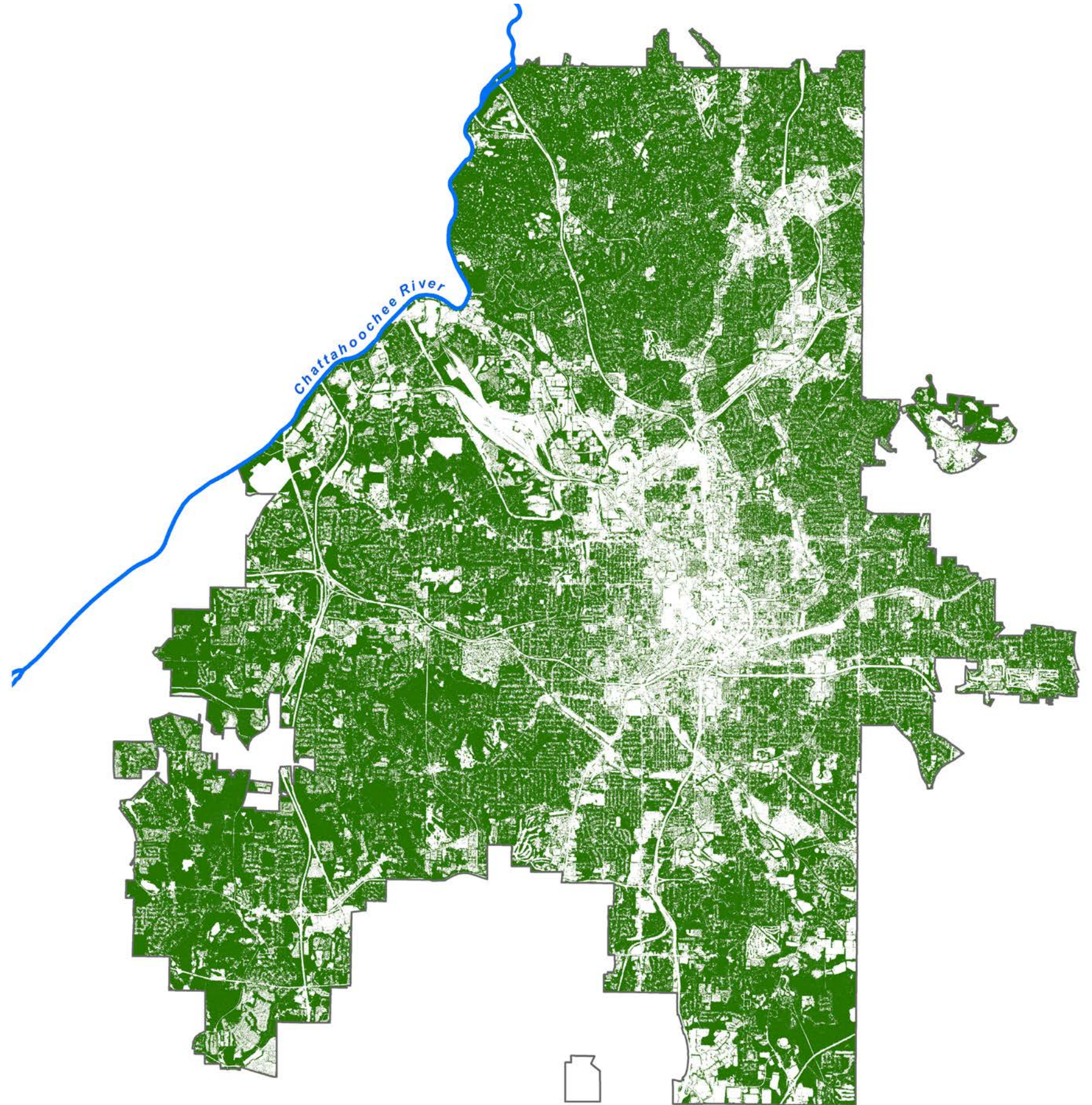
- Streams with less than 60% tree canopy within the 75' buffer
- Street tree canopy in urban core to improve air quality and decrease urban heat island impacts, with diverse native palette
- Unforested areas within the 300' riparian corridors, including removal of pavement and addition of green roofs in existing development areas
- 303d- listed impaired streams
- Brownfields outside of City Design production areas
- Heavy industrial outside of City Design production areas



RESTORE - TREE CANOPY








The Current State

- 2014 city tree canopy was 47.1%
- Approximately 2.3% of tree canopy is estimated to have been temporary growth in unfinished developments.
- From 2008 to 2014 the greatest loss of tree canopy was in redevelopment of single-family residential homes.
- 20% of city trees are threatened by pests, such as emerald ash borer
- Typically, for every 100 street trees planted, 50 or less will survive to 13-20 years



RESTORE - TREE CANOPY

How do we get to 50%

City Design Category		2008	2014	Change	Goal	Change needed	Major Initiative*	Protect & Plant^
	Core	7%	11%	+4%	15%	+4%	X	
	Clusters	26.5%	26%	-0.5%	35%	+9%	X	
	Corridors	25%	27%	+2%	30%	+3%	X	
	Production Areas	28%	27%	-1%	27%	0%		X
	Urban	48%	50%	+2%	55%	+5%	X	
	Suburban	59%	58%	-1%	60%	+2%		X
	Rural	70%	65%	-5%	67%	+2%		X

*Major public realm tree planting of diverse tree species, soil volume, tree management and replacement initiative

^ Protection of tree canopy and new planting of diverse species

Key Actions

- Protection of existing tree canopy using the previously identified protection zones
- Major young forest initiative to plant 3,600 new acres of trees and manage to maturity
- Annual replacement of dead trees outside forests.
- City wide public realm tree inventory to inform new planting and management
- Assessment of tree mortality and demographics to track trajectory of forest and planted public realm trees.

