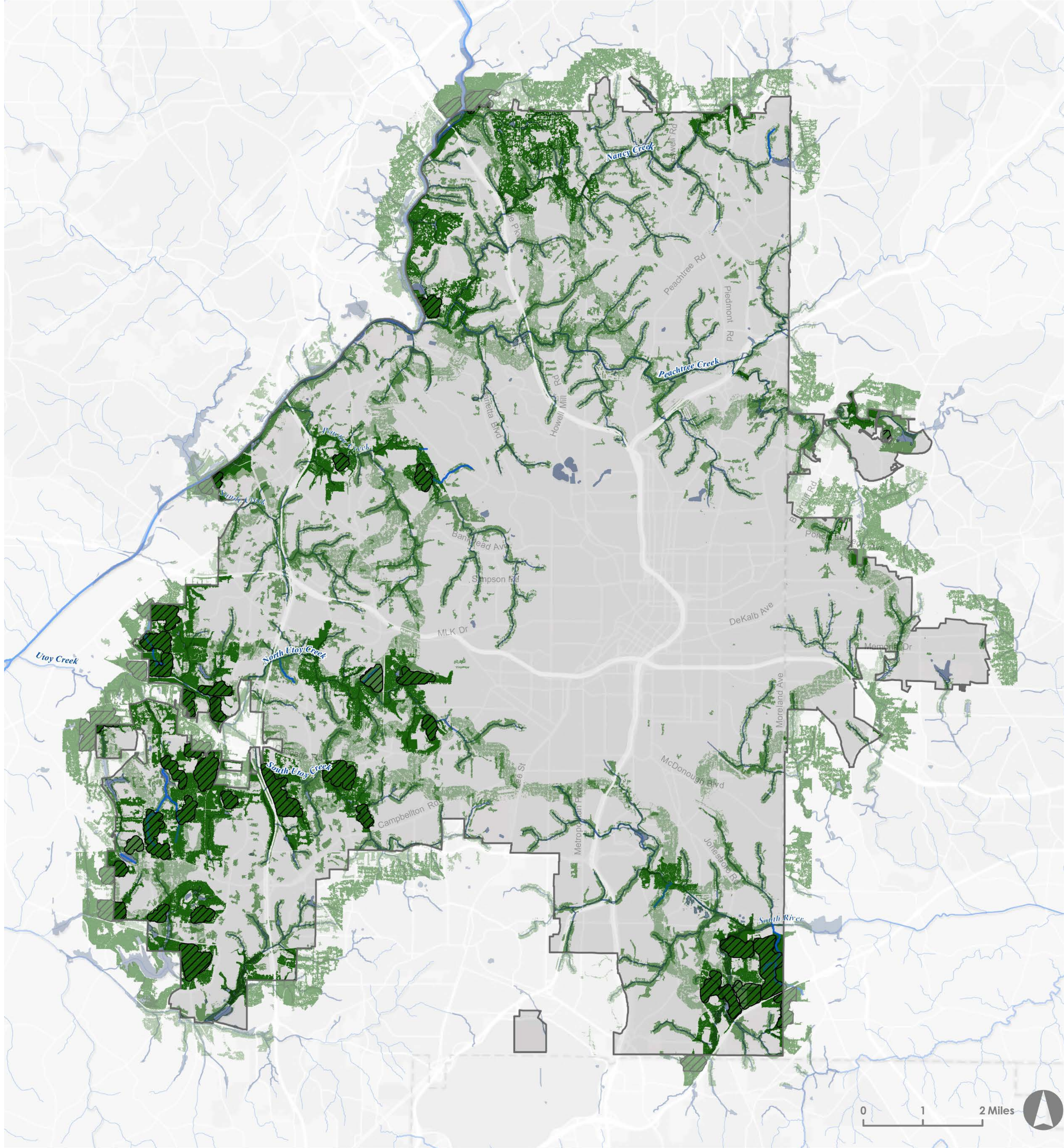


PROTECTION ZONES



Legend	Descriptions:
	Atlanta City Limits + Streets + Radial Streets — Radial streets identified in City Design, Design for Connections.
	Streams Creeks Rivers + Riparian Corridors — 100yr floodplains, streams, and stream buffers measured from 300' on each side of stream centerlines.
	Forest Connectivity Corridors — Areas of high animal connectivity importance between Interior Forest Cores.
	High Biodiversity Areas — Areas of highest habitat and biodiversity value, including: interior forest cores, mature forest and soils, floodplain forest, and wetlands.
	Interior Forest Core — Continuous tree canopy from 2014 data, not over impervious surface, that is 300' from any forest edge.

What would happen here:

- Avoid removal of trees wherever possible
- Encourage smart and sustainable development
- Ensure balance for areas of overlap with City Design growth areas

Note: Data, boundaries and geographies to be confirmed by City

Potential regulations specific to these zones

- Minimized disruption of intact large forest (development should occur on the edges)
- Tree Assessment required
- Required pre-submittal reviews
- Special replanting standards (more stringent)
- Appeal process
- Exemptions
- Stronger enforcement

What else?